

## Responsible Business SEAL Initiative

### S is for Sea



#### OYSTER RECOVERY PARTNERSHIP | ORP

Works with individual experts and management agencies, including the National Oceanic and Atmospheric Administration ([NOAA](#)), the [Army Corps of Engineers](#) and the

[Maryland Department of Natural Resources](#), to assist with the monumental task of oyster restoration, monitoring and adaptive management. These experts include scientists from the University of Maryland Center for Environmental Science who have substantially increased oyster hatchery production, environmental organizations such as the Chesapeake Bay Foundation and Maryland watermen, who have the necessary boats, equipment and knowledge of the Bay to bring local experience and expertise to our projects.

- ❖ Through Housekeeping we promote the conservation of water by allowing guests the choice to have their sheets and towels not replenished during their stay and a portion of the savings is donated to the ORP.
- ❖ Through the Front Office we promote rounding guest bills and/or donations on the registration cards to be given in support of this organization to get our guests involved.
- ❖ Through Food and Beverage we promote our Oysters and Pearls promotion in Explorers' Lounge which regularly donates \$1 per order to the OCP, however this Wednesday will be donating \$5 for every order consumed.
- ❖ The culinary team saves the oyster shells and sends them back the ORP in order to use the shells to "replant" oysters to support the restoration of the population of our bay oysters.

### E is for Educate



Living Classrooms Foundation strengthens communities and inspires young people to achieve their potential through hands-on education and job training, using urban, natural, and maritime resources as "living classrooms."

- ❖ We have partnered with the Fresh Start program to offer sponsored internships for their wood working program within our Engineering department.
- ❖ Over the Labor Day weekend this year, we held a fundraiser, featuring our Baltimore Grand Prix driver, Simona de Silvestro. The event raised \$15K for this organization.
- ❖ We also bring awareness to the organization by promoting a mural project painted with Living Classrooms and our Executive Team on our VIP cards signed by our GM to welcome each VIP to our property.
- ❖ Our Holiday end of the year cards which we send to clients of the hotel also support promote our support for Living Classrooms.

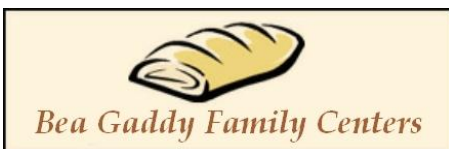


The mission of Baltimore Outreach Services, Inc. is to provide comprehensive services and programs to homeless women and their children. These services include emergency shelter, supportive housing, educational programming, health and mental health services, job training and employment counseling.

Culinary arts training is an eight-week program taught on site by [Chef Connie Crabtree](#). Each week is composed of basic cooking and kitchen skills in addition to classroom instruction. The curriculum focuses on teaching the basic skills and terms needed for employment in a commercial kitchen at the level of beginning prep cook. The Sanitation and Food Safety Certification Program is incorporated into the curriculum. Students intern off-site two days a week at local restaurants throughout the Baltimore metropolitan area as part of their training.



- ❖ We currently work with offering 8 week internships for the graduates of Chef Crabtree's program.



The Bea Gaddy Family Centers is a community based nonprofit organization that assists and provides food to needy families throughout the Greater Baltimore Metropolitan Area and throughout Maryland. Using donations to change the lives of many. Since 1981, has been and always will be assisting in providing our neighbors with food, clothing and other items. We also provide a safe haven from the storms of life for women and children on a transitional basis.

- ❖ We assist this community program by bringing awareness internally at the hotel and ask for volunteers to donate clothing, dried/canned goods and time to the Thanksgiving event every year.

## A is for Air



**BALTIMORE HONEY**

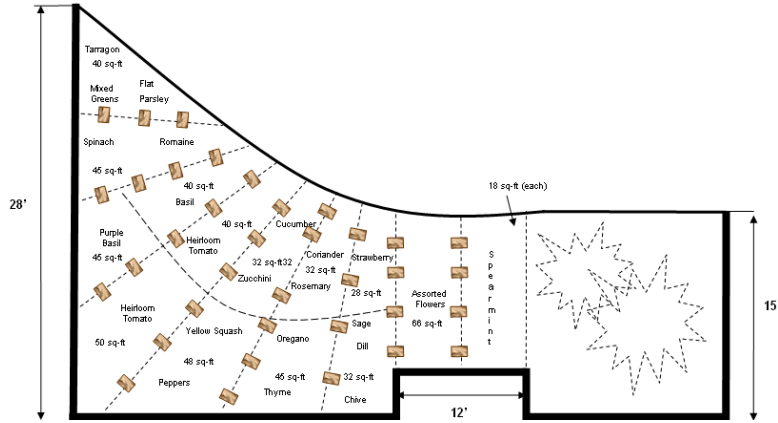
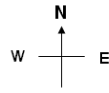
Baltimore Honey is a not for profit IRS 501(c) 3 organization of local dedicated people just like you and me that provides the City of Baltimore with the B'more HON E<sup>(TM)</sup> brand of micro-local natural/organic raw honey with community supported apiary (CSA) "the first of its kind, anywhere!"

- ❖ Through Food and Beverage we promote our apiary with menu items on our made of honey.

- ❖ We house an apiary on the 3<sup>rd</sup> floor courtyard that can be viewed by all levels.

## L is for Land

7<sup>th</sup> Floor Courtyard – Herb Garden - 2011  
Total area: 606 sq-ft



[About](#)
[Programs](#)
[WATERKEEPER](#)
[Herring Run Nursery](#)
[Get Involved](#)
[Calendar](#)

### Tree Planting at New Era/Southside Academy HS

Saturday, October 29, 2011, 08:00 AM - 1:00 PM  
New Era Academy  
2700 Seamon Avenue Baltimore, MD

Join Blue Water Baltimore, Parks & People Foundation, Alliance for the Chesapeake Bay, and TreeBaltimore as we plant trees on the campuses of three city schools. Baltimore City schools have under 14% canopy—help us alleviate this statistic by planting more than 250 trees. You can also stop by to get a free tree! We need volunteers to lead as well as just plant. To volunteer contact Debra at 410-254-1577x100 or [volunteer@bluewaterbaltimore.org](mailto:volunteer@bluewaterbaltimore.org).